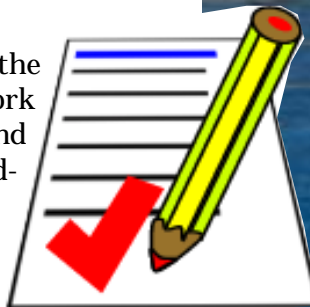


This assessment recording software is built specially to meet the needs of schools that must collect coursework assessments to build up into overall examination marks.

Its current set-up answers the complexity in Physical Education assessments, where the wide variety of options and activities can bring difficult administrative problems for the staff. It is equally applicable to GCSE, AS and A2 examinations.

### What it does

This software speeds and simplifies the recording and processing of coursework assessment data to supply the reports and mark sheets needed by teachers, schools, moderators and examination boards.



### Track record

The system was introduced in the Spring term of 2000 and used to produce GCSE examination assessment forms for 2001.

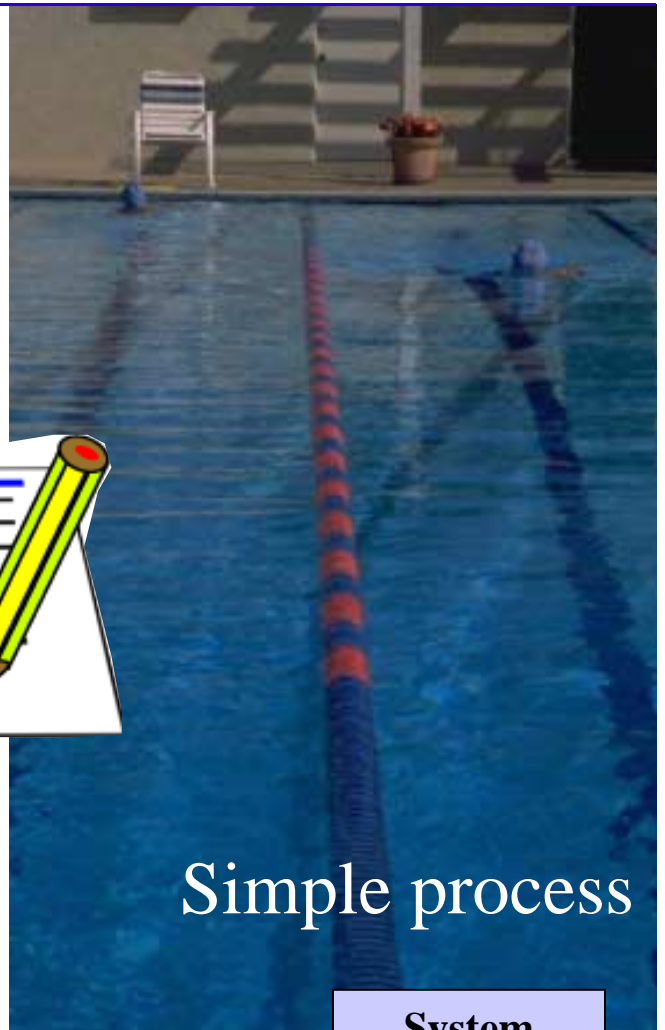
For the teaching staff, there is a huge saving of time and much greater accuracy than manual processes:

"In 1999, once we'd collected the information, it took five members of staff a whole day to prepare the reports and mark sheets. This year it took the PC five minutes."

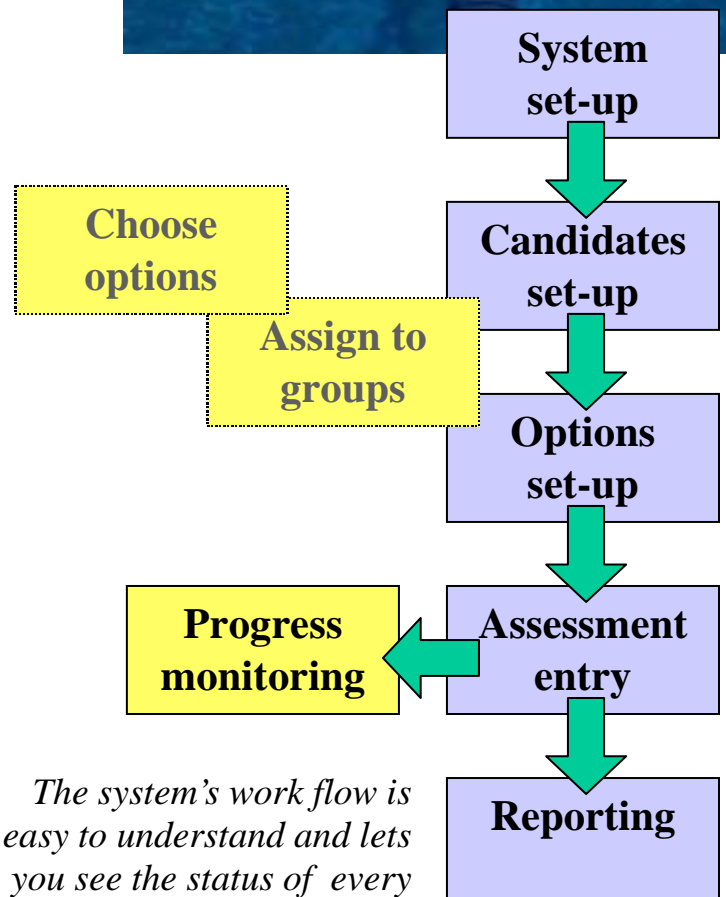
### Benefits

As well as speed and accuracy, the system also gives reports that the teacher can use to review progress with individual students. This can help them to focus on areas for improvement or where extra effort may be recommended.

For the Head of Department, there is the ability to monitor the staff's workflow and ensure that all of the required information is ready when needed. The Head of Department can also check students' progress to make sure that they all meet the examination board's requirements (for example, number of pieces of coursework, choice and grouping of topics).



Simple process



*The system's work flow is easy to understand and lets you see the status of every candidate at any time*



If you would like more details, please e-mail [sales@eAssess.org.uk](mailto:sales@eAssess.org.uk) or see web site [www.eAssess.org.uk](http://www.eAssess.org.uk)

The eAssess Coursework (eAC) system has been designed to solve the complex problems of data recording, calculation and reporting for GCSE, AS and A2 examinations.

## Physical Education

Physical Education is an ideal application for the eAC system:

- Many students choose it as a GCSE option
- It offers a wide range of choices and activities
- Critical rules decide which activities are taken into the result
- Paperwork and backup requirements are time consuming and complicated, with the danger of error and the need to rework the examination forms

## Benefits

The eAC system is designed to improve the coursework assessment process:

**Efficiency:** enter the information ONCE and leave the hard work to the software

**Improved performance:** Review the progress of each student at any time, always seeing the best score within the rules

**Save time and effort:** Produce the reports and back-up that are needed for examination entry and moderation automatically at the push of a button

**Progress monitoring:** Use dashboard functions to monitor workload across the department

**Accuracy:** The system does the calculation– you reduce errors and the need to rework

**Consistency:** Check consistency of assessment scoring between different teaching groups and tutors, and year to year

## Technical Requirements

The software will run on any PC that is capable of supporting Microsoft Office 2000 applications. (Pentium III or better processor, Windows 2000, ME or XP are ideal). It is based on the well-established Microsoft Access database system, but an Access licence is not required; the eAC software package includes all necessary support files. It can be installed by your system or network administrator.

If you need more technical information or plan to obtain a suitable PC, please call or e-mail as shown on the right.

## Innovative solutions

The eAC system uses database techniques to save time for teachers and Heads of Department.

Any element of information need only be entered once. After that, the system prepares draft forms, assessment lists, progress sheets and final reports on demand.

If results must be presented in several different formats, the system produces these using the same data elements and ensuring consistency at all times.

*Focus on performance, analysis and improvement*



## Examining Board Specifications

The current system version is set up for examinations in Physical Education. It covers the following specifications:

### 2003 onwards

OCR	AQA
1970 GCSE PE	3581 PE (A)
1971 GCSE PE (Games)	3582 PE (B)
1071 GCSE PE (Short Course)	3583 PE (Games)
3980 PE Entry Level Certificate	
3875 AS PE (FPA, PPA, PA forms)	

New forms are now available to meet Edexcel specifications 1827 and 3827 .

We can configure the software to cover further Boards, subjects and specifications. If your specific requirement is not shown above, please call or e-mail.

## Installation disk and pricing

The software is delivered on a CD-ROM. The price for the software with the above specifications, licensed to the end of 2003 is £115 + VAT, including P&P. Check the full specification or try an evaluation version, on our web site.

## About eAssess.org.uk

eAssess.org.uk is a division of Future IS Consulting Ltd., a consultancy operating in the UK and Europe that specialises in project and information management.

eAssess.org.uk  
Future IS Consulting Limited  
PO Box 37  
Hindhead  
Surrey GU26 6YP

Phone: 01428 608227  
Fax: 01428 608209  
Email: sales@eAssess.org.uk  
Web: www.eAssess.org.uk